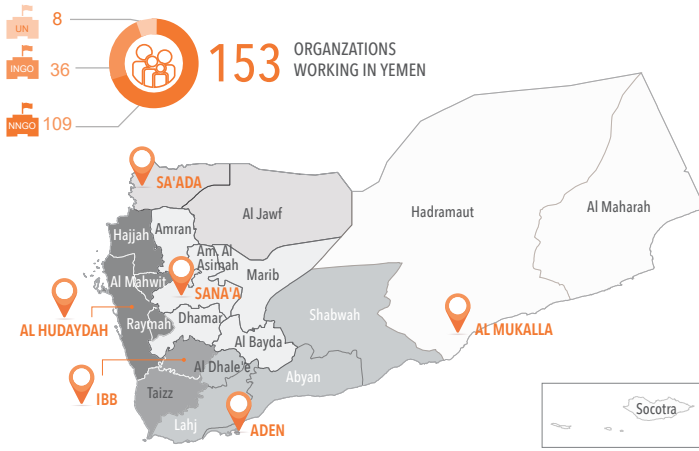
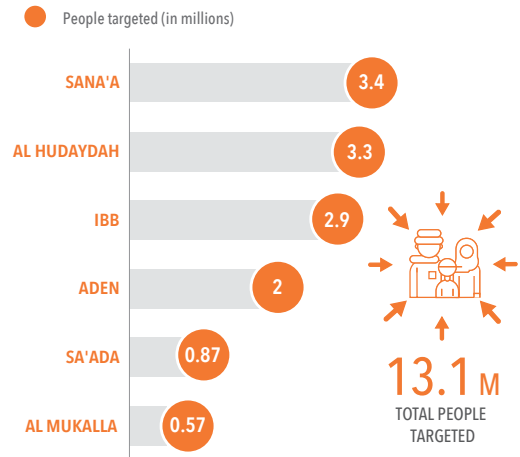


HUB OVERVIEW: PEOPLE TARGETED AND ACTIVE CLUSTERS

HUBS AND GOVERNORATE COVERAGE



BREAKDOWN OF TOTAL PEOPLE TARGETED BY HUB



International and national humanitarian staff have worked in all areas of Yemen throughout the crisis. Following the declaration of an L3 Emergency in July 2015, the HCT agreed to establish six humanitarian hubs to coordinate humanitarian assistance in different areas. Humanitarian hubs are currently active in Sana'a, Aden, Hudaydah, Sa'ada and Ibb, with partners working in all governorates of Yemen. A sixth hub in Mukalla is planned, pending improvement of the security situation; Mukalla relief operations are currently coordinated from Aden or Sana'a. Field humanitarian hubs are intended to facilitate logistical operations and aid coordination in different areas of a united Yemen.

TOTAL PEOPLE TARGETED AND ACTIVE CLUSTERS BY HUB

Hub	People Targeted (M)	Partners	Active Clusters
ADEN HUB	2.9	64	Water, Shelter, Health, GBV, Child Pro., Education, Food, Agriculture, Protection, GBV, Child Pro.
AL HUDAYDAH HUB	3.3	61	Food, Health, Shelter, Child Pro., GBV, Water, Education, Protection, GBV, Child Pro.
IBB HUB	2.9	67	Education, Health, Food, Child Pro., GBV, Shelter, Protection, GBV, Child Pro.
SA'ADA HUB	0.87	34	Food, Health, Shelter, Child Pro., Education, Protection, GBV, Child Pro.
SANA'A HUB	3.4	90	Water, Food, Health, Child Pro., GBV, Shelter, Education, Protection, GBV, Child Pro.
MUKALLA HUB*	0.57	24	Child Pro., GBV, Education, Protection, GBV, Child Pro.

*The establishment of a humanitarian hub in Mukalla is planned, pending improvement of the security situation. Relief operations are currently coordinated from Aden or Sana'a.